



LUXMI METAL WORKS

FORGING EXCELLENCE SINCE 1978

QUALITY | TRUST | EXPERIENCE



www.luxmimetalworks.com

COMPANY PROFILE

Luxmi Metal Works was founded in the year 1978 by Lt. Sh. Prithvi Raj Sharma who is one of the most reputed persons in Steel forging industry. We use the extract of our experience of 35 years in the industry to offer high quality steel forging solutions to our clients.

Since 2002, we have been establishing our presence in the market under the highly strategic and effective leadership of Mr. Mahesh Sharma ji.

Luxmi Metal Works is a one stop destination for complete forging solutions having in-house R&D, Designing, Cutting, Forging, Heat Treatment, Machining, Destructive and Non destructive testing facilities.

We are highly acclaimed manufacturers of high quality gears, pinions, rolls, rings, blocks, shafts, crank shafts, heavy connecting shafts, flanges, gear couplings, standard and non-standard heavy forged products in Carbon, Alloy and Stainless Steel upto 5,000 Kg.

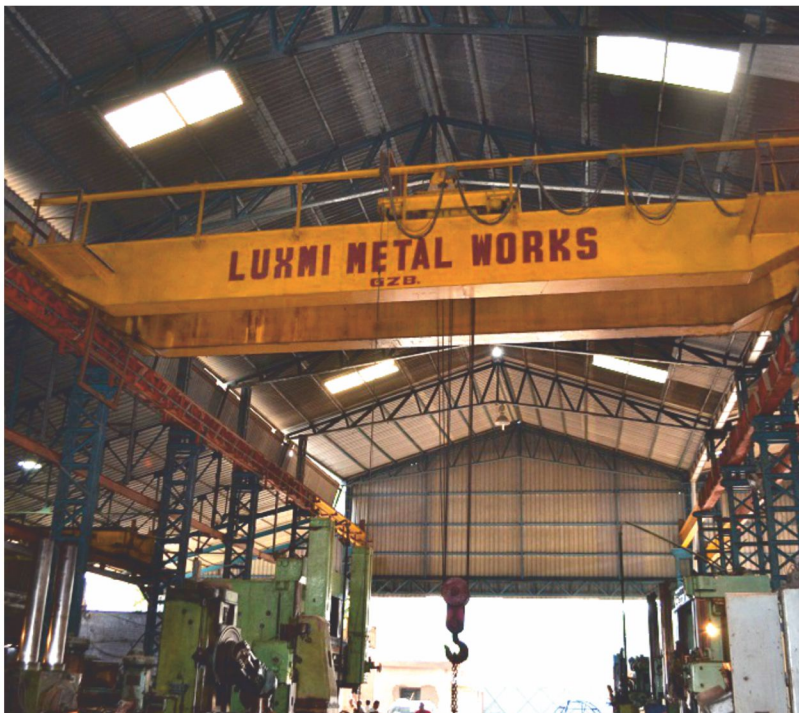
“Following the footsteps laid down by our founding father, we stand by our commitment of product quality and ethical business policies which has helped us earn the valuable trust of our clients.

Over the past 30 years, our company has come a long way in contributing to the steel forging and heavy machining requirements of India and abroad. Our expansion to a bigger shed, installation of bigger cranes to handle heavier jobs, and import of machines from Germany, U.S.A and Russia has been a key in the growth of our company.

We continuously strive to use the latest technology to offer cost effective, high quality and timely product deliveries to our clients.

Our commitment is to remain at the leading edge of our sector to find new and better ways to meet industry needs.”

— Mahesh Kumar Sharma



MULTIPLE SECTORS. DIVERSE PRODUCTS.

Luxmi Metal produces open die forgings and flanges which are supplied proof machined or finish machined as per customer requirements in various international grades of steel. The wide spectrum of industries that we serve include:

- Oil and Gas
- Rolling mills
- Heavy engineering
- Cement and Mining
- Wind power
- Sugar mills
- Machine building
- Railways and defence
- Crane Manufacturers

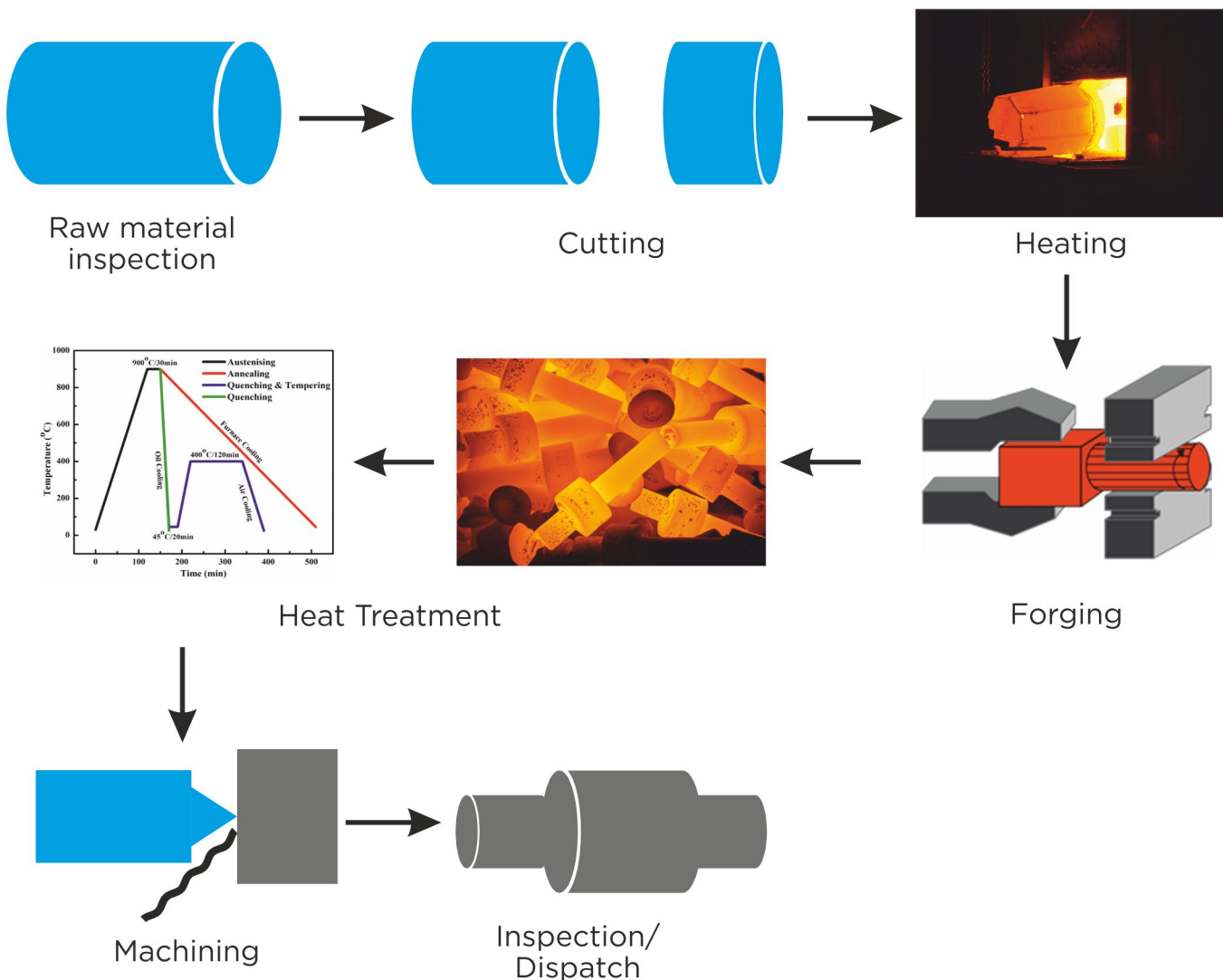
We export to USA, UAE, Canada, Nepal and various other countries.

RAW MATERIAL AVAILABILITY

Carbon Steel Grades	:	En8, En9, C-45, C-50, CL I - VI, SAE 1040, SA 105 etc
Alloy Steel Grades	:	20 MnCr5, 42 CrMo4, 17CrNiMo6, En 19, En 24, En 353 etc
Stainless Steel Grades	:	SS 304, 310, 316, 316 L, 410, 416 etc

PROCESS FLOW CHART

Strict chemical and physical tests are done at various steps of the product cycle.



INFRA / MANUFACTURING FACILITY

Our plant has the capacity of forging 4,000 MT steel annually with in-house cutting, forging, heat treatment, machining and testing facilities.

CUTTING SHOP

We have numerous Band Saws enabling us to meet the forging capacity with minimum-cutting losses.

- 1400mm dia capacity (Multi-Cut)
- 850mm dia capacity (Malwa Machine tools)
- 600mm dia capacity (INDTOOLS)
- 350mm dia capacity

FORGE SHOP

Our Forge shop is equipped with a pair of open die pneumatic hammers, and digitally controlled reheating furnaces for having the desired homogenous temperature.

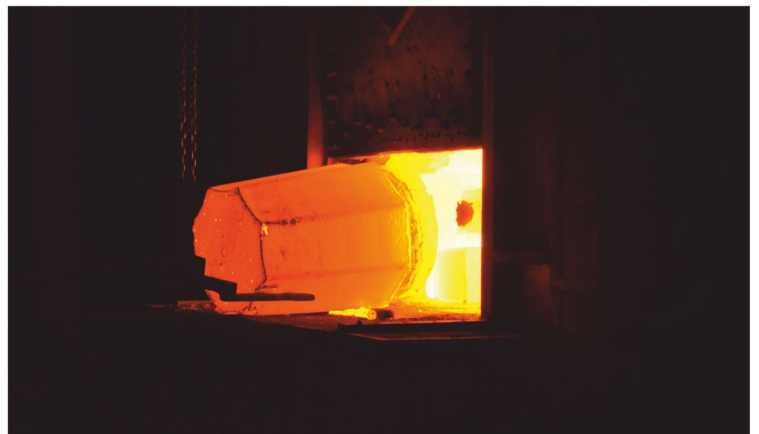
- Pneumatic Open die Hammer – 5 MT Capacity - (free forging hammer)
- Pneumatic Open die Hammer – 1800 mm dia. Capacity (Ring forging hammer)
- Reheating PNG furnace 12 Tons capacity
- Over head Crane 25 Tons capacity
- Over head Crane 15 Tons capacity
- Jib Crane 10 Ton capacity

HEAT TREATMENT

Heat treating is used to alter and improve the physical properties of a given material using a heat treat furnace.

With our Heat Treatment setup we are able to do the following processes:

- Normalising
- Annealing
- Hardening & Tempering



MACHINE SHOP

We have heavy imported machinery, skilled machinists and calibrated equipments to provide customised products to our customers. We keep expanding and upgrading our machinery setup. As of March 2022, we have the following machinery:

CNC MACHINES

Turning lathes - Cincinnati 15U and Nissin NST 30/125 (For jobs upto 400mm in diameter and 2700mm in length) CNC VMCs, VTLs and HMCs arriving very soon

VERTICAL TURRET LATHES:

- Chuck size - 36" - 3 machines. (Webster & Bennett)
- Chuck size - 48" - 2 machines (Webster & Bennett)
- Chuck size - 83" (Sedin)
- Chuck Size - 120" (Kolomna)

GEAR HOBBING MACHINES:

- TOS FO-16 — 2 machines
- TOS FO-25

HORIZONTAL BORING MACHINE:

- Floor Boring WMW 125/5
- Horizontal boring with spindle size 160mm, 125mm, 120mm, 115mm, 100mm, 63mm in various makes like WMW, TOS, Portage, Collet

LATHES (HORIZONTAL):

- Hegenscheidt, TOS, Herbert and other makes.
- 2.5m, 3m, 4.5m, 5m, 5.5m, 6m length

PLANO MILLING MACHINE:

Gray Cincinnati - USA -1700mm x 4000mm

Radial drills, Milling machines, Shapers, Slotters are also a part of our equipment portfolio.



TESTING FACILITY

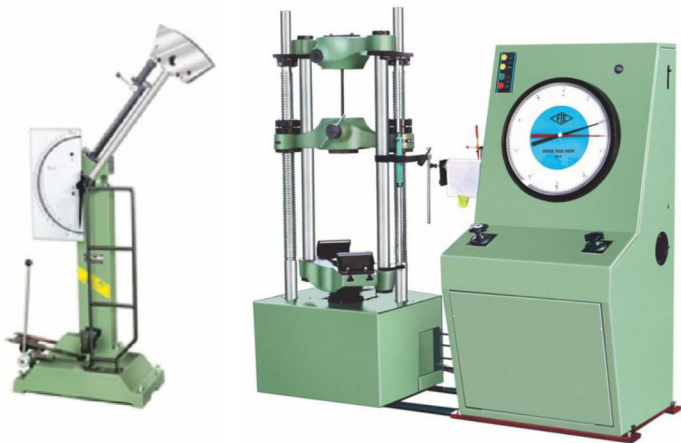
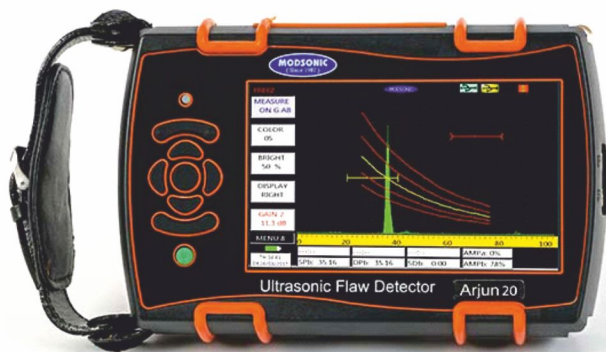
Our quality management team focuses on stringent tests and processes that ensure our products are at par with international standards. Third party inspection is carried out by various inspection agencies like Lloyds, IBR, TUV, DNV etc.

DESTRUCTIVE ANALYSIS

- Universal Testing Machine — 20T
- Charpy and Izod impact testing machine

NON DESTRUCTIVE TESTING

- Ultrasonic Flaw detector Modsonic Arjun 20— (UT)
- Dye penetration test Magnaflux— (LPT/ DP/ FPT)
- Magnetic Particle Inspection — (MPI)
- Portable digital Hardness tester
- Micro Examination — (Grain structure and ASTM grain size number)
- Infrared portable thermometer gun - Mextech IR 1300



PRODUCT RANGE

SHAFTS AND ROUNDS



Max length 4000 mm
Max weight 4000 kg

BLOCKS AND PLATES



Max length 4000 mm
Max weight 4000 kg

GEAR / WHEELS



Max OD 1600 mm
Max weight 4000 kg

ROLLS



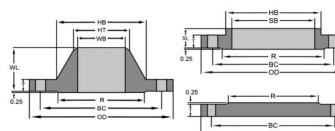
Max diameter 500 mm
Max length 4000 mm
Max weight 4000 kg

FORGED RINGS

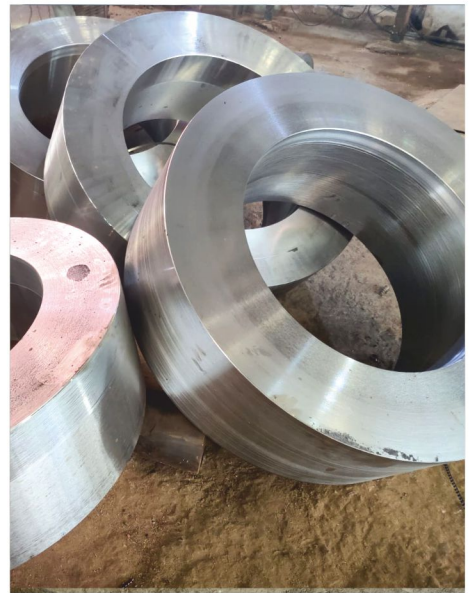


Max OD 1700 mm
Max thickness 450 mm
Max weight 2500 kg

FLANGES



NPS 20 to NPS 60
according to ASME
B16.47, B16.5, DIN,
AWWA standards
Pressure class
150 to 900





LUXMI METAL WORKS

FORGING EXCELLENCE SINCE 1978

Luxmi Metal Works
E-62 & 63, Site-1, Bulandshahr Road Industrial
Area, Ghaziabad, Uttar Pradesh, INDIA
E: sales@luxmimetalworks.com
www.luxmimetalworks.com
Mob: 9811286759, 7838605454
Tel: 0120 4156851

(Associated unit)
Apex Enterprises
A-1/292
Swadeshi Compound
Kavi Nagar, Industrial
Area, Ghaziabad (U.P.)
E: apex.enterprises292@gmail.com

